



A Note About Safety

Although the methods I demonstrate are considered safe practice in the woodworking industry, the responsibility for working safely rests solely on your shoulders. As a result, the publishers ezwoodshop.com and Grassland Publishing assume no responsibility for damages, injuries suffered, or losses incurred as a result of following the information that is presented in this book.

Remember that power tools can be *especially* dangerous. Spend time with your owner's manual to learn how a tool operates and the safety features included with that tool. This book is intended to *supplement* the owner's manual, *not replace it*. Also, it's your responsibility to use protective eye wear (safety glasses, goggles), ear protection (plugs, earmuffs), and dust control products (respiratory masks and dust filters) while using those tools.

Do I Need a Building Permit?

Most building codes make a clear distinction between structures that stand alone and structures that are attached to your house. In many states, stand-alone structures do not require permits, yet anything that is attached to your house does. Be sure to contact your local government office for information about obtaining a permit to build this attached pergola.

A handwritten signature in black ink, appearing to read "Andy".



You Can Build a Pergola!

You don't need to be a carpenter to build a pergola like this. I'll show you step-by-step how to bring it all together - with only a few tools and some common lumber.

— Start Building

— See Tools

— See Lumber



ALSO FROM EZ WOODSHOP
EZ PROJECT PLANNER

FIND OUT MORE



1 Ledger

2 Posts

3 Beam

4 Rafters

5 Slats

Print Guides



Diagrams



Pattern

Start Over



1 Ledger

2 Posts

3 Beam

4 Rafters

5 Slats

Print Guides

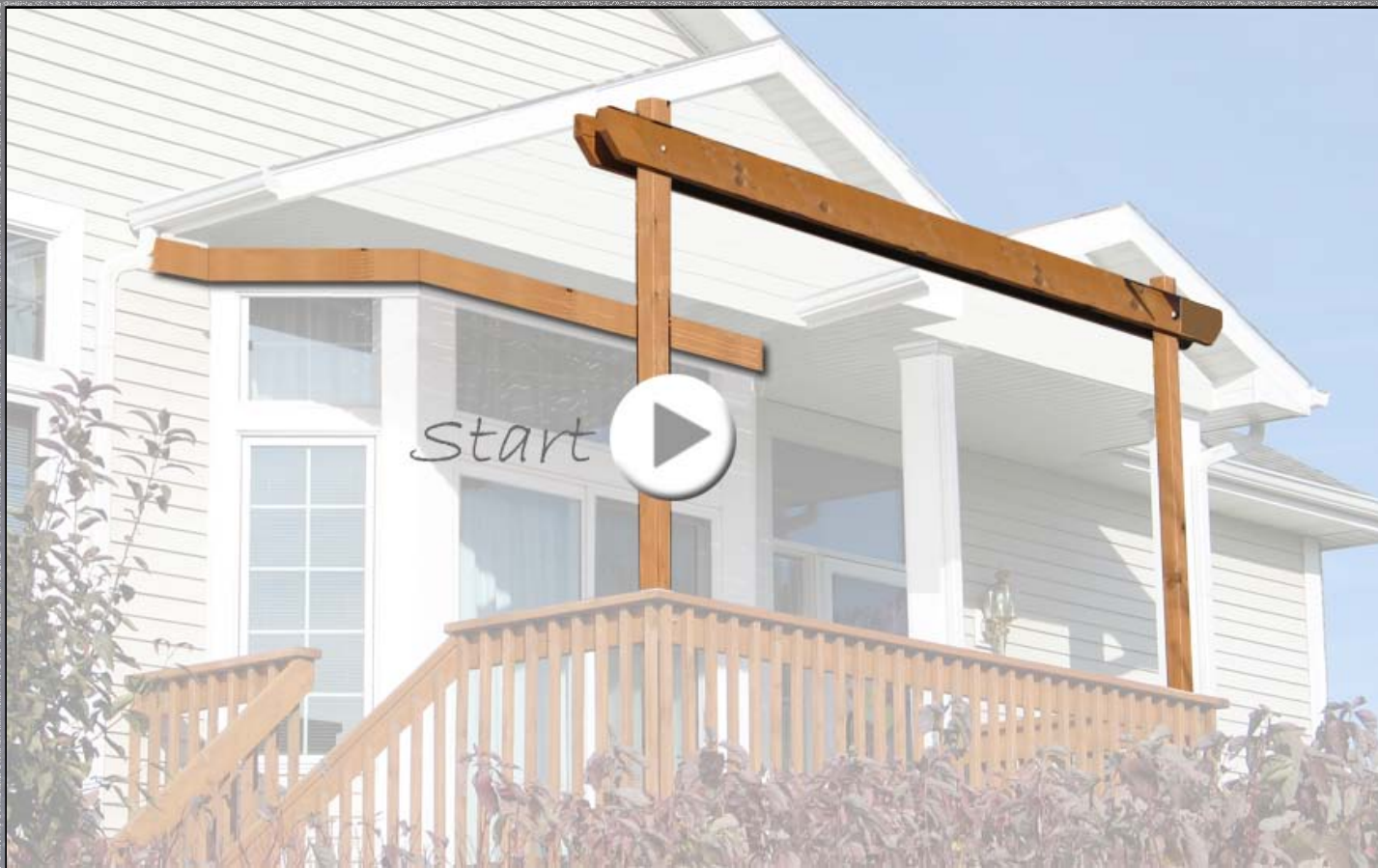


Diagrams



Patterns

Start Over



1 Ledger

2 Posts

3 Beam

4 Rafters

5 Slats

Print Guides

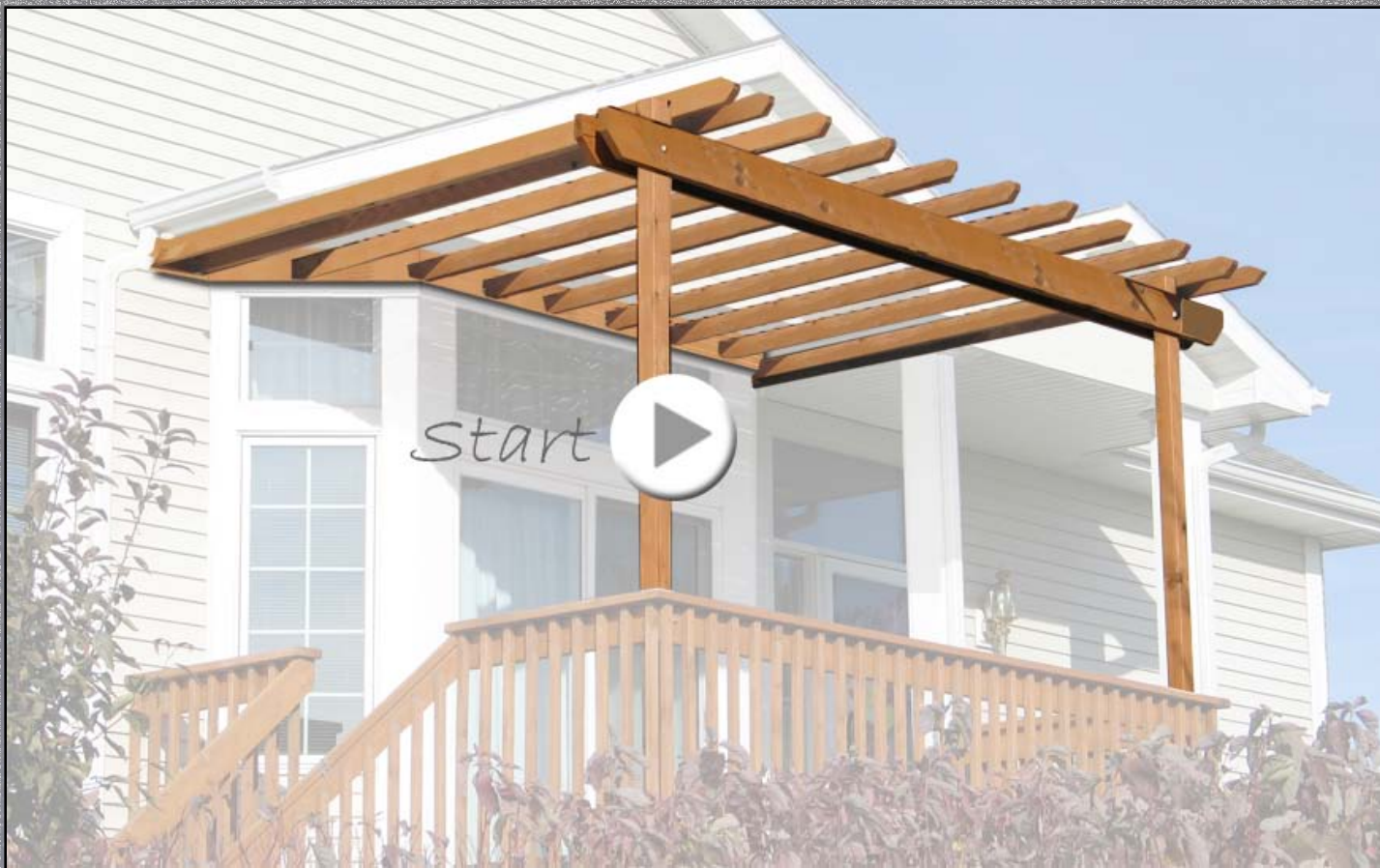


Diagrams



Patterns

Start Over



1 Ledger

2 Posts

3 Beam

4 Rafters

5 Slats

Print Guides

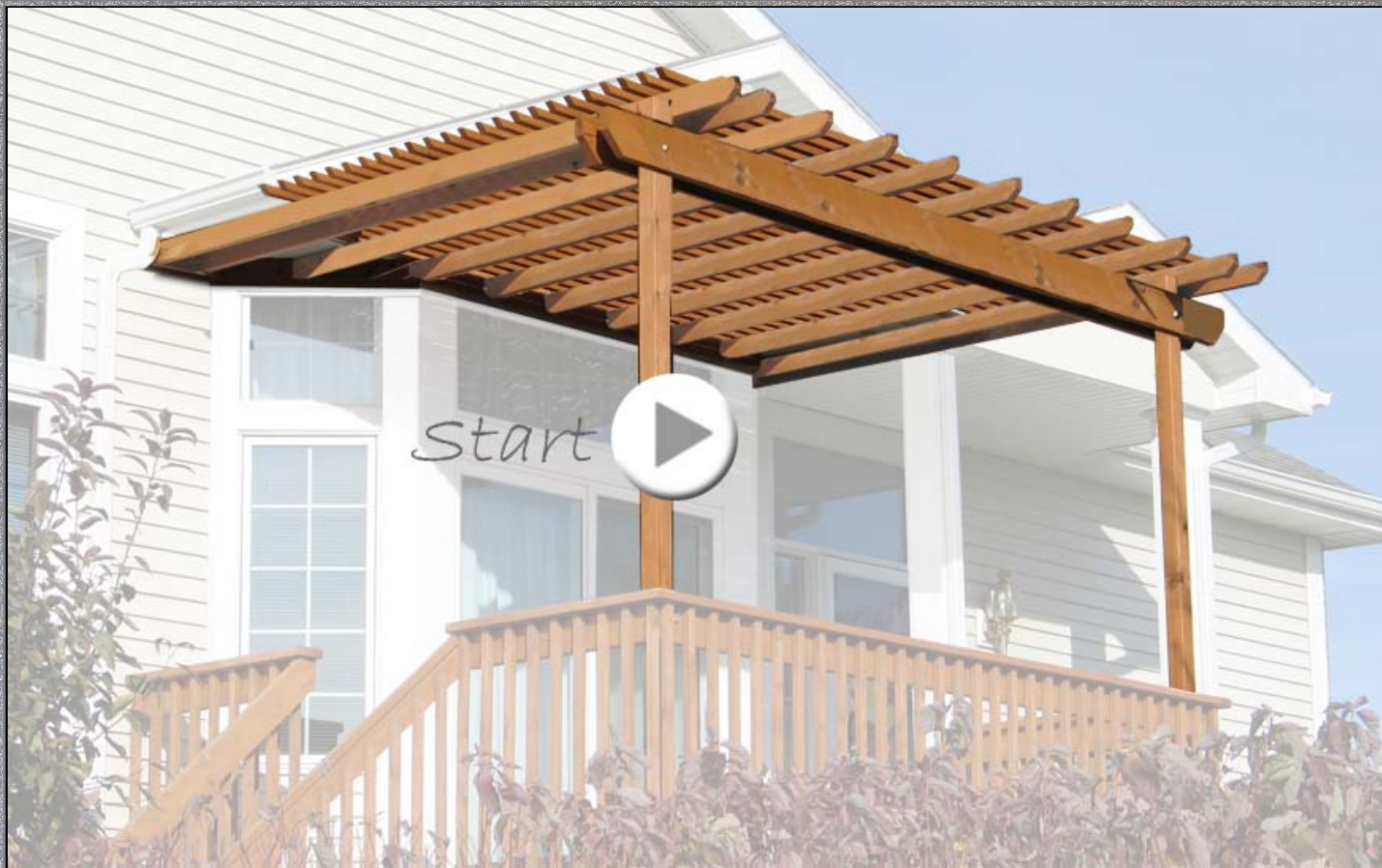


Diagrams



Patterns

Start Over



1 Ledger

2 Posts

3 Beam

4 Rafters

5 slats

Print Guides



Diagrams

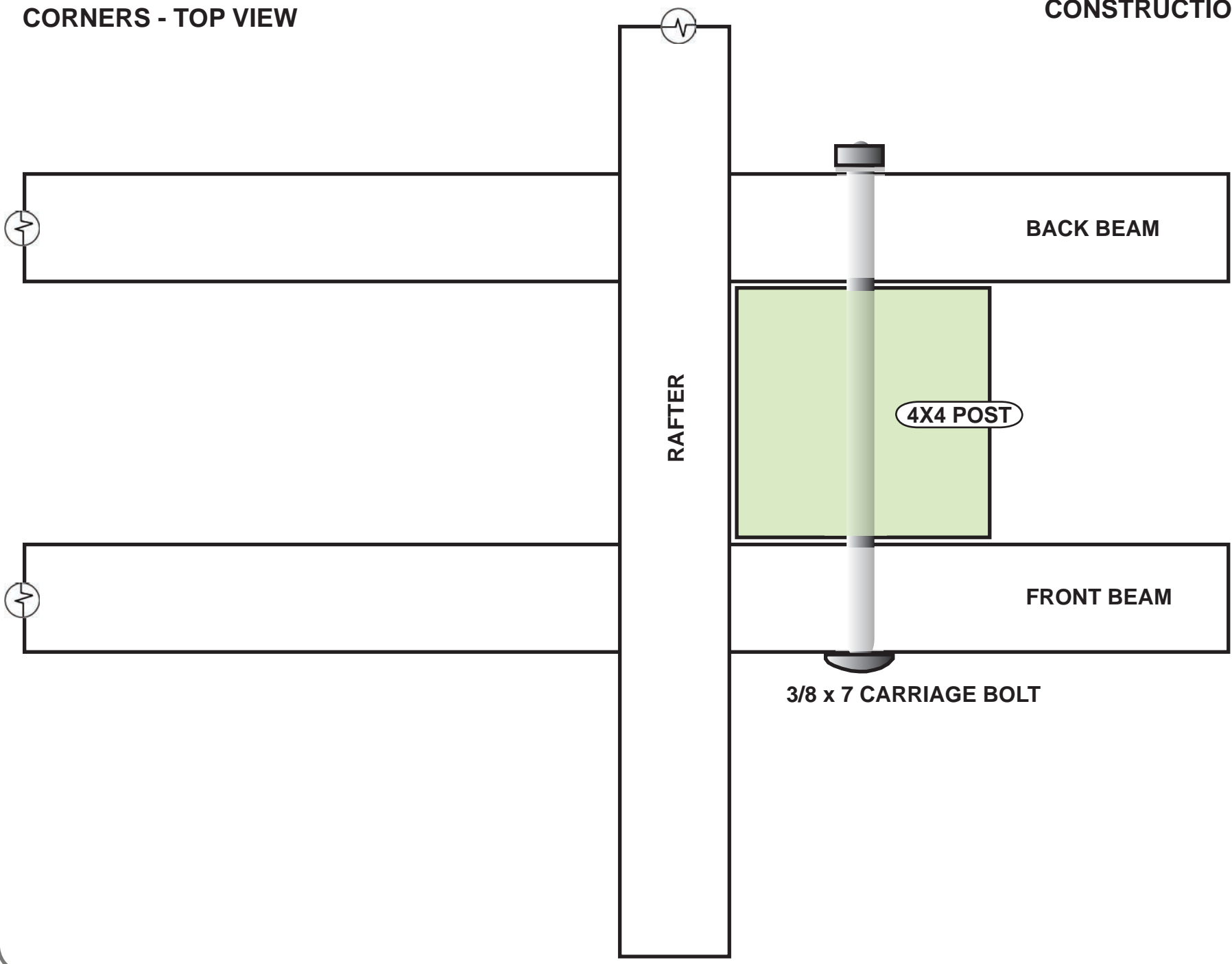


Patterns

Start Over

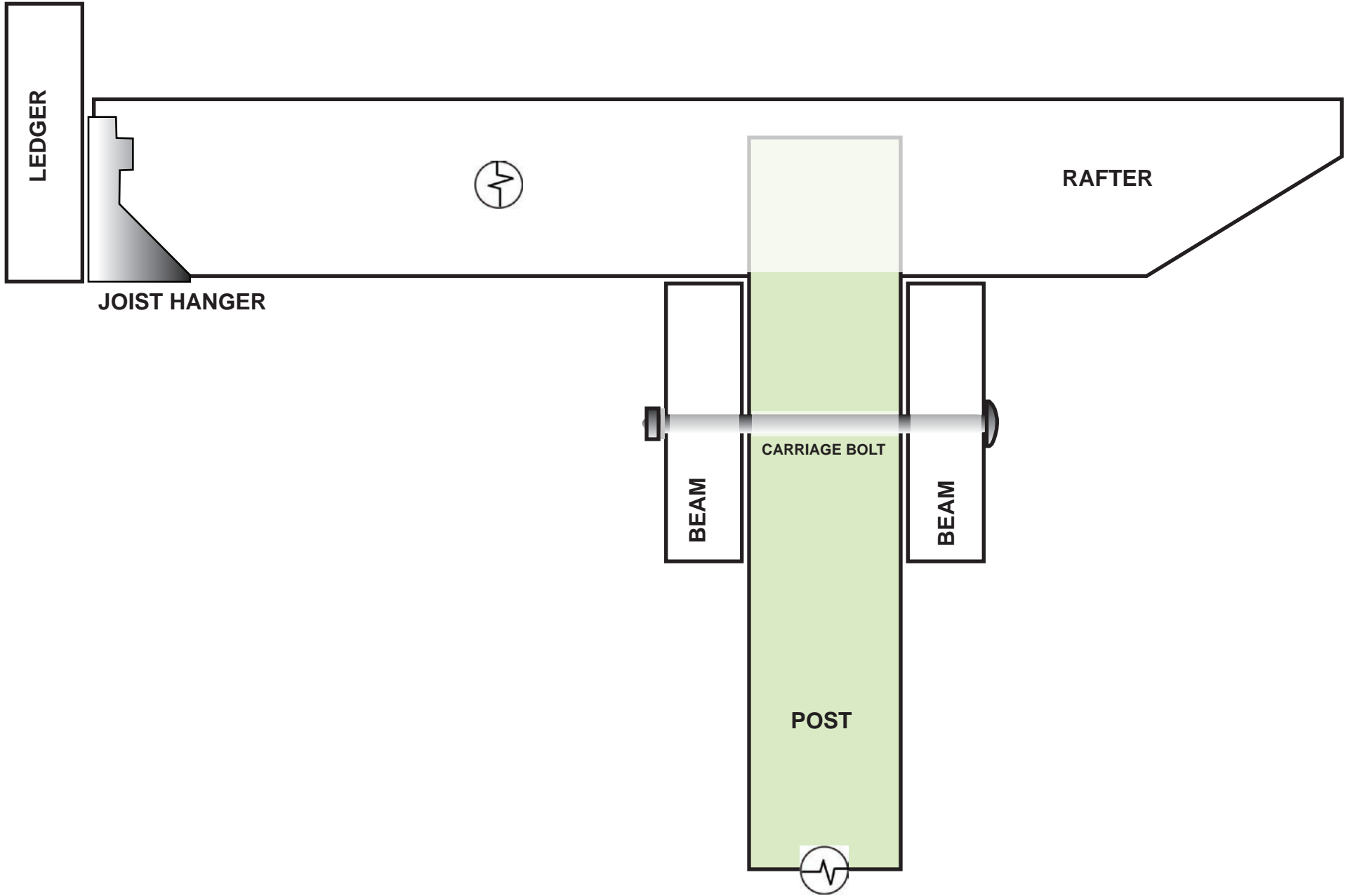
CORNERS - TOP VIEW

CONSTRUCTION GUIDE

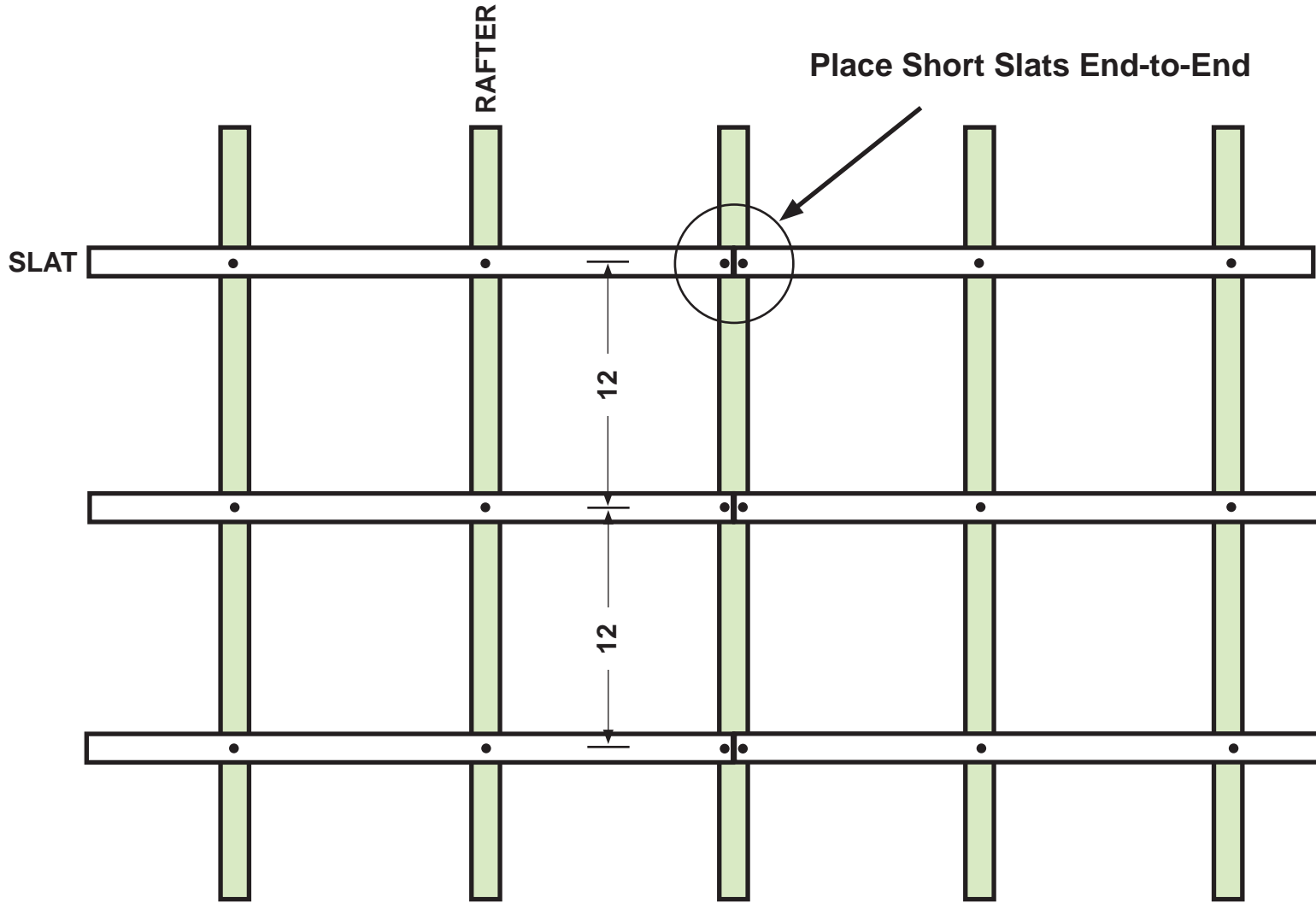


RAFTERS - SIDE VIEW

CONSTRUCTION GUIDE



SLATS - TOP VIEW



Lumber



2x6
Ledger - Beams



2x4 - Rafters



2x2 - Slats



4x4 - Posts

- 1 Ledger
- 2 Posts
- 3 Beam
- 4 Rafters
- 5 slats

Print Guides



Diagrams



Patterns

Start Over

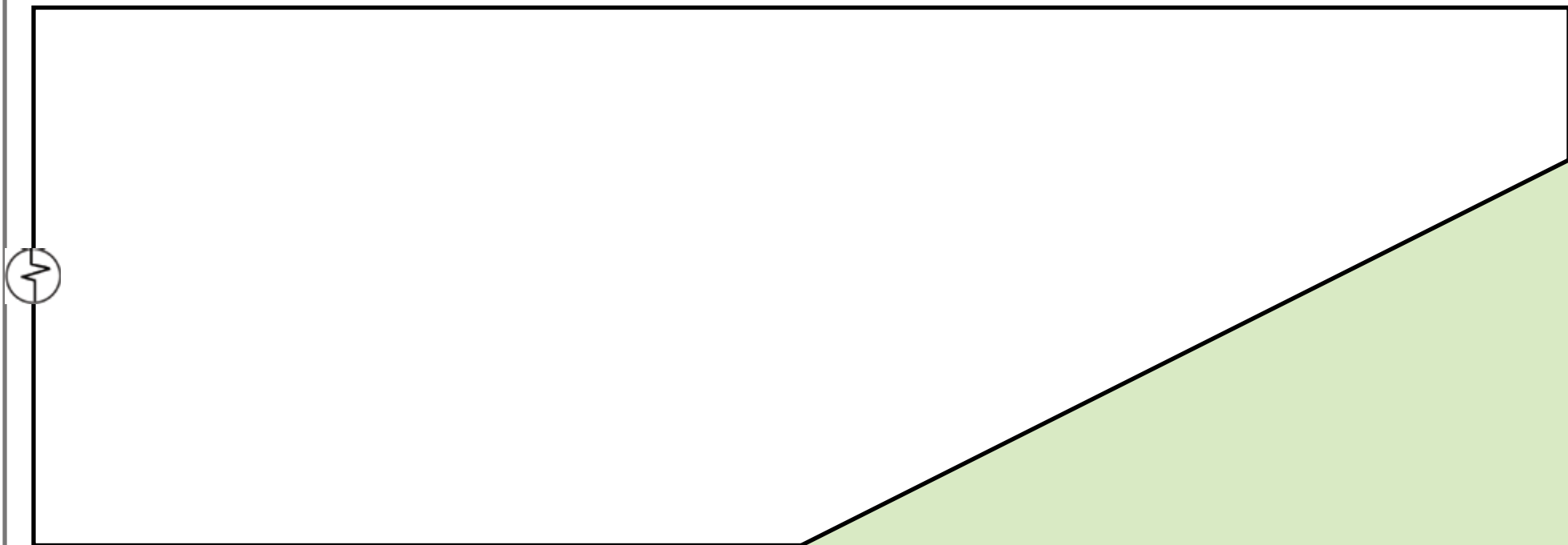
[back to plan](#)

[NEXT »](#)

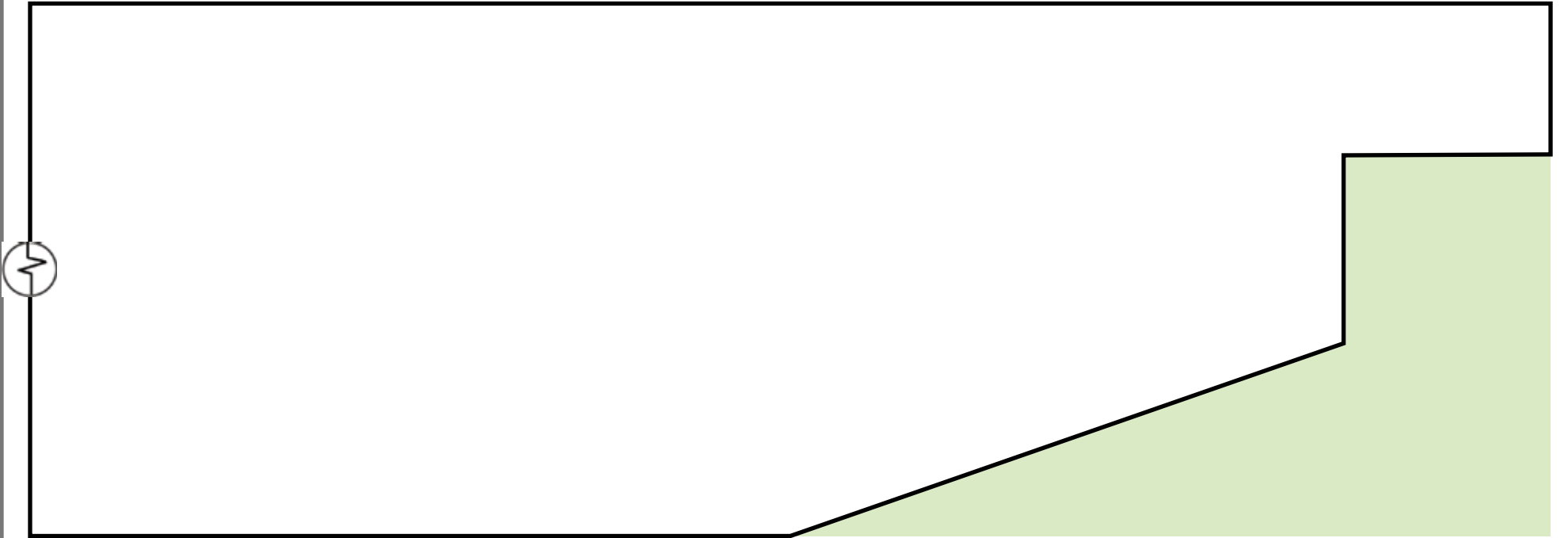
[PRINT](#)

RAFTER PATTERNS

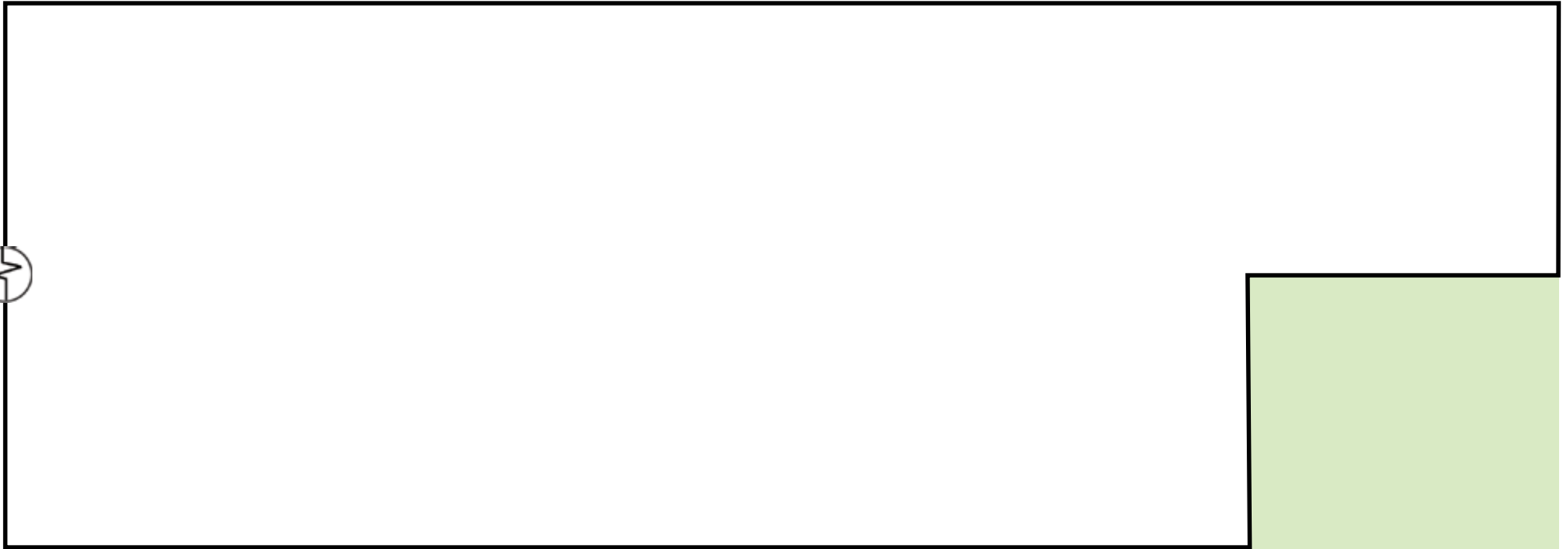
FULL-SIZE PATTERNS



FULL-SIZE PATTERNS



FULL-SIZE PATTERNS



FULL-SIZE PATTERNS



Tools Needed



Circular Saw



Drill



Jigsaw

1 Ledger

2 Posts

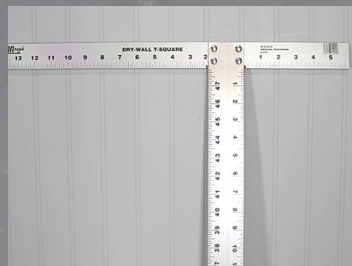
3 Beam

4 Rafters

5 Slats



Level



Framing Square



Leveling Laser

Print Guides



Diagrams



Patterns

Start Over